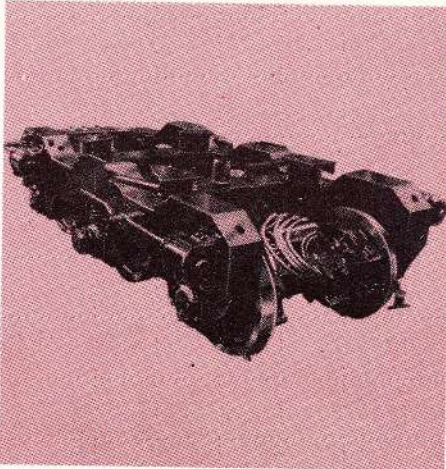
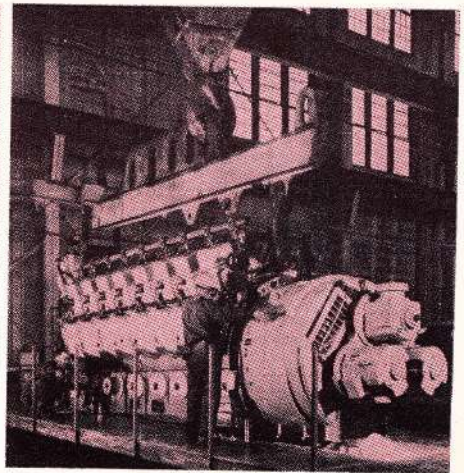


A single mechanically driven blower and fully ducted electrical cooling and combustion air system with pressurized electrical control compartment.



Hi-adhesion trucks with low weight transfer characteristics and matching wheelslip highly discriminating and modulating control system.



Up-dated Model 251 engines with high capacity, water-cooled turbocharger and steel cap pistons.

## LOOK AT THESE NEW "MLW" FEATURES



**MLW-Industries**  
A Division of  
**MLW-Worthington Limited**  
1505 Dickson St., Montreal 426, P.Q.